



**CONSTRUCTION ENTERPRISES W.L.L.**  
شركة كوبري للمشاريع الانشائية ذ.م.م.





**CONSTRUCTION ENTERPRISES W.L.L.**  
شركة كوبري للمشاريع الانشائية ذ.م.م.

## ▶ CORPORATE

[ABOUT COPRI](#)

[COMPANY PROFILE](#)

[MISSION, VISION & VALUES](#)

[COPRI SPECIALTY SECTORS](#)

[ORGANIZATION CHART](#)

[LOCATION AND CONTACT](#)

## ▶ ROADS AND BRIDGES

### ▶ LOCAL PROJECTS

[BUBYAN ISLAND PORT](#)

[KING FAHED EXP](#)

[JABER AL AHMAD CITY](#)

[1ST RING ROAD](#)

[5TH RING ROAD](#)

### ▶ INTERNATIONAL PROJECTS

[BANGLADESH](#)

[ALBANIA](#)

[KAZAKHSTAN](#)

[AZERBAIJAN](#)

## ▶ BUILDINGS AND HOUSING PROJECTS

### ▶ ELECTRO-MECHANICAL

### ▶ PRODUCTION CENTERS

[ASPHALT PLANT](#)

[BATCHING PLANT](#)

[EMULSION PLANT](#)

[EQUIPMENT](#)

### ▶ PHOTO GALLERY



the art of construction  
[www.copri.com](http://www.copri.com)

**SINCE THE 1960s**, Kuwait has achieved remarkable progress in urban development. Over the past five decades, there has been consistent and rapid advancement in all construction sectors, with projects executed according to international standards and codes.

**ESTABLISHED IN 1969**, COPRI Construction Enterprises W.L.L. takes pride in serving as a primary contractor for roads and buildings in this extensive development.

**AS A LEADER IN THE CONTRACTING FIELD**, COPRI has successfully completed projects exceeding USD One Billion in value.



WITH KUWAIT LAUNCHING NEW MEGA PROJECTS, COPRI has formed partnerships with reputable international contractors to bid for and execute these prestigious endeavors.



EXPANDING ITS HORIZONS, COPRI has also secured contracts in *Albania, Georgia, Bangladesh, Kazakhstan, Gambia, Syria, Mauritania, Azerbaijan, Sudan, and Lebanon* through joint ventures with local and international contractors.

COMMITTED TO QUALITY AND EFFICIENCY, COPRI continually strives to enhance its competitiveness and ensure client satisfaction.



## COMPANY PROFILE



### COPRI CONSTRUCTION ENTERPRISES W.L.L.

Founded: Kuwait, 1969

Commercial Registration: C.R. 15219

## CAPITAL

KD 10,000,000/- Kuwaiti Dinars

USD (\$) 33,000,000 Fully Paid!

## CLASSIFICATION

KUWAIT CENTRAL COMMITTEE

ROADS AND INFRASTRUCTURE

**CATEGORY I**

BUILDINGS

**CATEGORY I**

CORPORATE

## MEMBERSHIPS

- I. Kuwait Chamber of Commerce No. 1666
- II. Kuwait Union of Contractors
- III. Kuwait Union of Asphalt Producers
- IV. International Road Federation IRF

## BANKERS

- I. NBK, National Bank of Kuwait
- II. CBK, Commercial Bank of Kuwait
- III. BBK, Bank Bahrain and Kuwait
- IV. ABK, Al-Ahli Bank of Kuwait
- V. KIB, Kuwait International Bank

## SCOPE OF WORK

- I. General Contracting
- II. General Trading
- III. Production Centers

## SISTER COMPANY

COPRI Housing S.A.L. - Lebanon



## MISSION

ACHIEVING TOTAL CLIENT SATISFACTION through a dynamic, proud, and experienced team of professionals committed to excellence.



## VISION

TO MASTER THE "ART OF CONSTRUCTION" project after project. Our work should become a quality reference and guide for others.

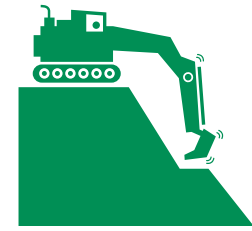


## VALUES

PRIDE, PROFESSIONALISM, HARD WORK, and Creativity; without such values, we become a substandard contractor.







**EARTHWORK**



**ASPHALT WORKS**

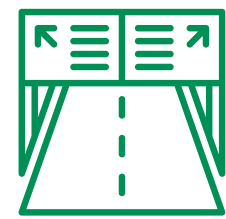
**TURNKEY  
BUILDING  
PROJECTS**



**IRRIGATION NETWORKS**



**ELECTRICAL AND  
TELECOMMUNICATION NETWORKS**



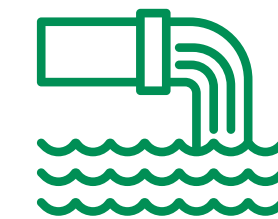
**HIGHWAY RECONSTRUCTION  
AND MAINTENANCE**



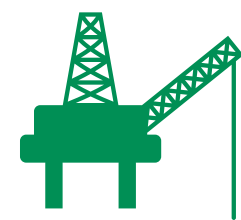
**STORM WATER SYSTEMS  
AND CULVERTS**



**INTERCITY RENOVATION**



**SEWAGE TREATMENT PLANTS  
AND PUMP STATIONS**



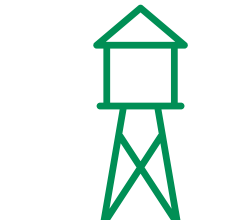
**OIL RIG PLATFORM  
AND PIPELINES**



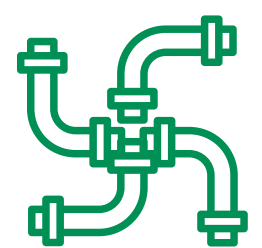
**ROAD MARKING  
AND TRAFFIC SIGNS**



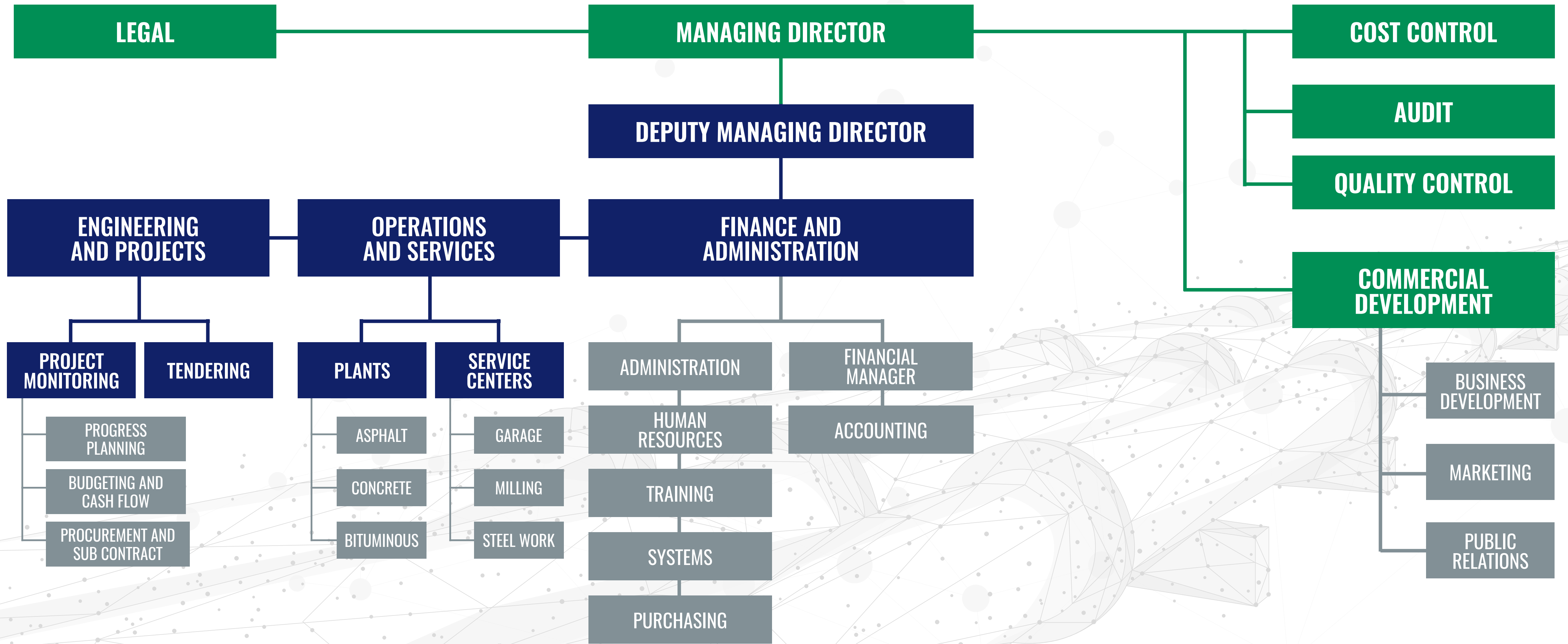
**HOUSING AND URBAN  
DEVELOPMENT**



**WATER RESERVOIRS**



**SANITARY SYSTEMS**







# ROADS AND BRIDGES

## KUWAIT PROJECTS







# BUBYAN ISLAND PORT LINK



كوبرى  
COPRI  
CONSTRUCTION ENTERPRISES W.L.L.

كوبرى  
COPRI  
CONSTRUCTION ENTERPRISES W.L.L.

كوبرى  
COPRI  
CONSTRUCTION ENTERPRISES W.L.L.

# KING FAHED EXPRESSWAY



ROADS AND BRIDGES





# JABER AL AHMAD CITY

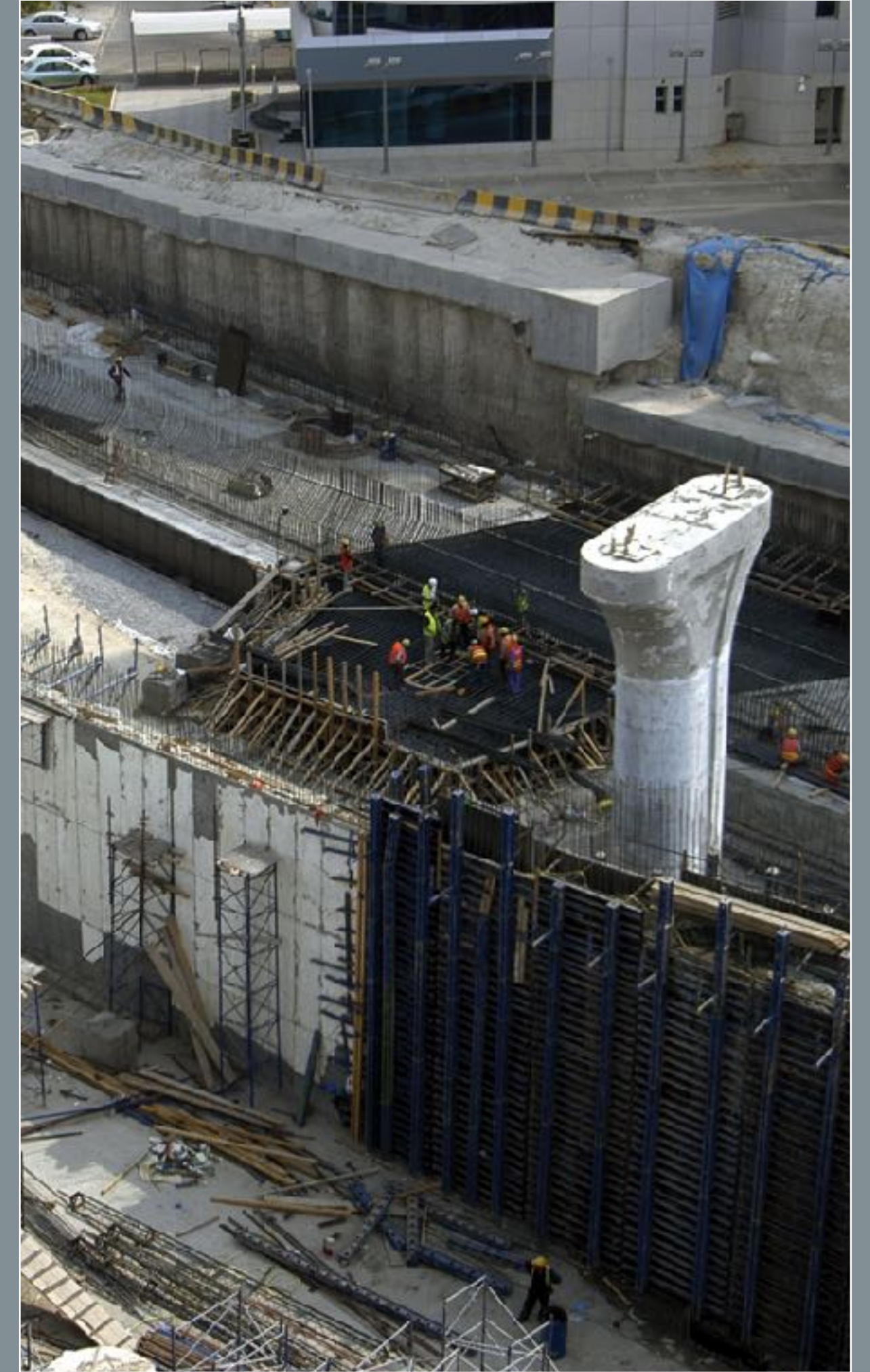
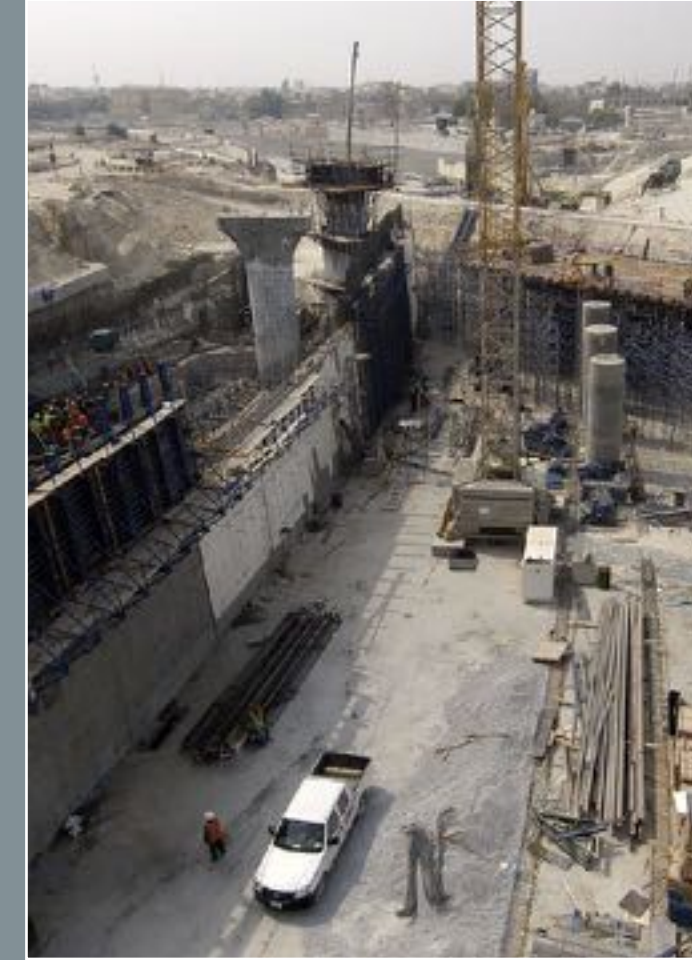


# 1ST RING ROAD



# 1ST RING ROAD





# 1ST RING ROAD



# 1ST RING ROAD





# 5TH RING ROAD

| ROADS AND BRIDGES

# 5TH RING ROAD

ROADS AND BRIDGES







# 5TH RING ROAD

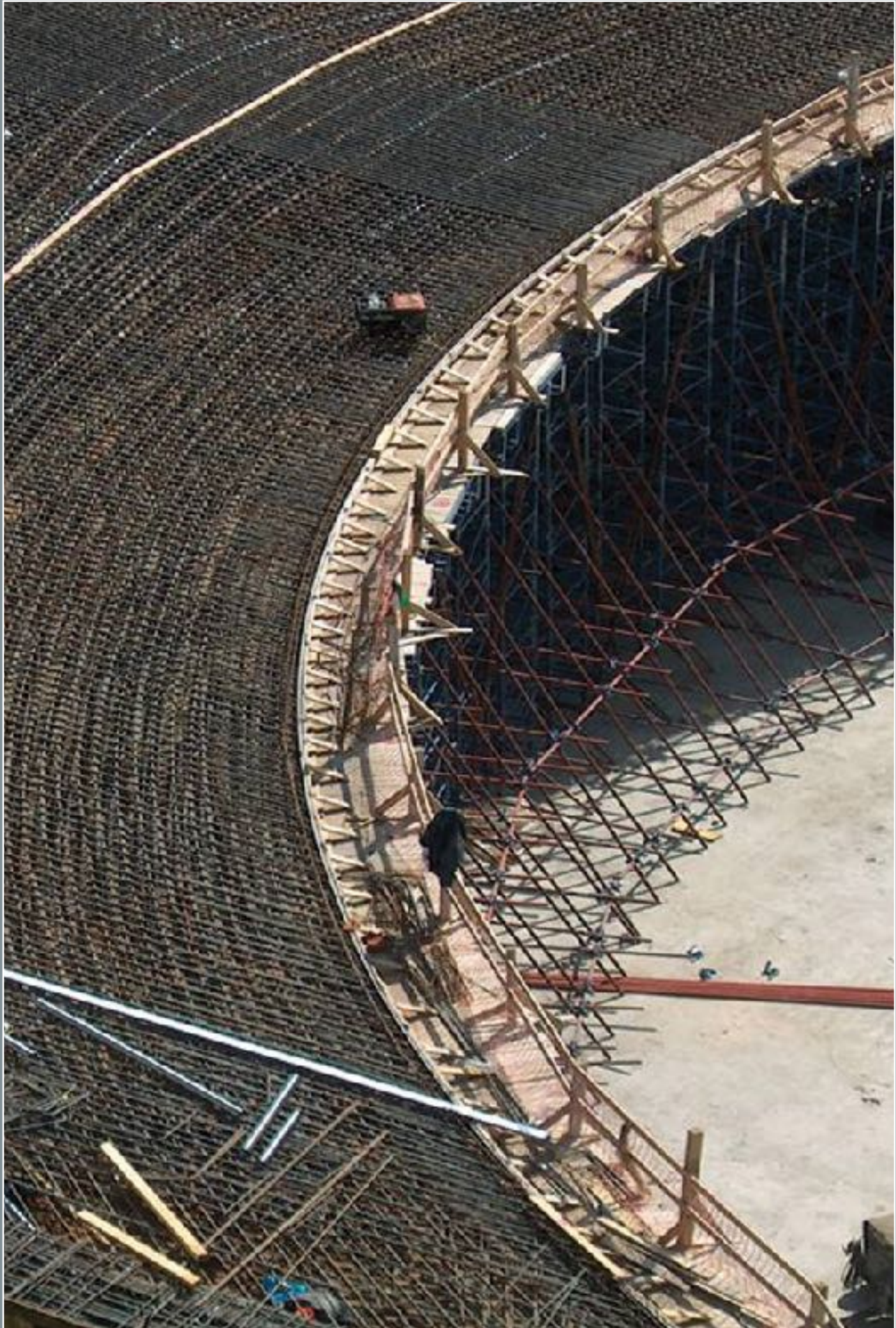
ROADS AND BRIDGES

# 5TH RING ROAD

ROADS AND BRIDGES



# 5TH RING ROAD





# ROADS AND BRIDGES

## INTERNATIONAL PROJECTS



DAPDAPIA BRIDGE,  
BANGLADESH



# KARNAPHULI BRIDGE, BANGLADESH

KARNAPHULI BRIDGE,  
BANGLADESH



# KARNAPHULI BRIDGE, BANGLADESH





# TIRANA-ELBASAN HIGHWAY, ALBANIA



# TIRANA-ELBASAN HIGHWAY, ALBANIA



# KALIMASH, ALBANIA

ROADS AND BRIDGES



WESTERN EUROPE-CHINA  
CORRIDOR, KAZAKHSTAN



# WESTERN EUROPE-CHINA CORRIDOR, KAZAKHSTAN



# BAKU BYPASS, AZERBAIJAN

ROADS AND BRIDGES

# BAKU BYPASS, AZERBAIJAN

ROADS AND BRIDGES





# BUILDINGS AND HOUSING PROJECTS



**BUILDINGS**  
SALMIYA, KUWAIT





BUILDINGS  
BEIRUT, LEBANON







**ELECTRO-MECHANICAL**













# PRODUCTION CENTERS



# ASPHALT PLANT



# ASPHALT PLANT



# ASPHALT PLANT



# ASPHALT PLANT

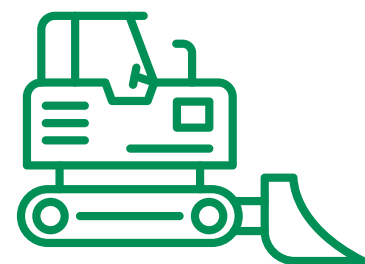




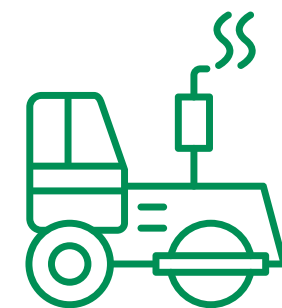
# EMULSION PLANT



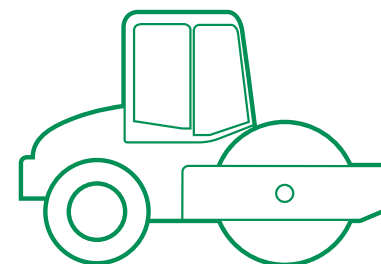




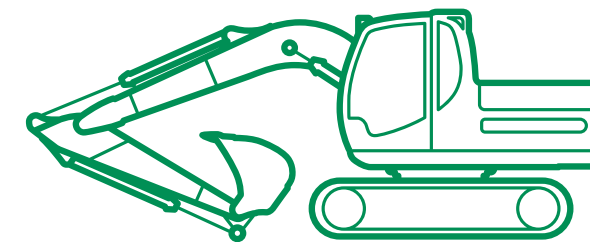
LOADER  
جرافة



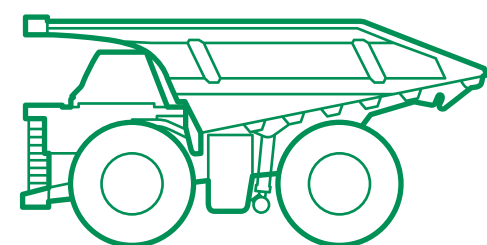
PNEUMATIC ROLLER  
جهاز ضغط هوائي



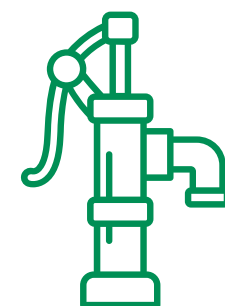
TANDEM ROLLERS  
مدحلة تندم



EXCAVATORS  
حفارات



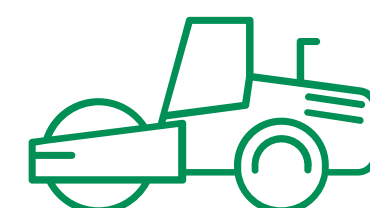
DUMP TRUCKS  
شاحنات قلابة



DEWATERING PUMPS  
مضخات تصريف المياه



TIPPER TRAILERS  
مقطورات قلابة



COMPACTORS  
مداحل



















A blue-tinted night photograph of a city street. In the foreground, a multi-lane highway curves to the right, with light trails from vehicles. To the left, a large mosque with a prominent dome and minarets is illuminated. The background shows a city skyline with various buildings and streetlights. The overall scene is captured in a long-exposure style, creating a sense of motion and urban activity.

# PHOTO GALLERY



















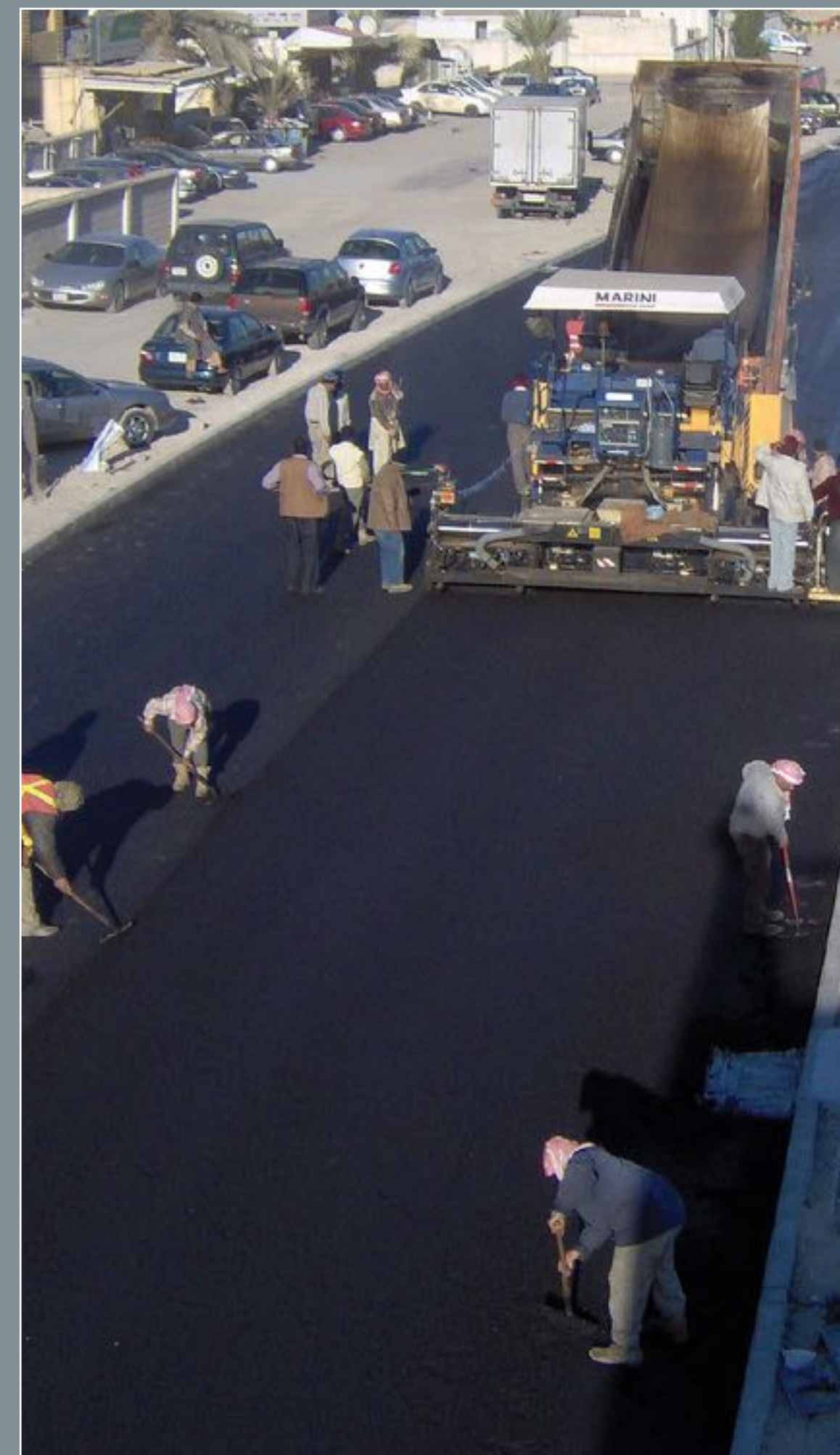




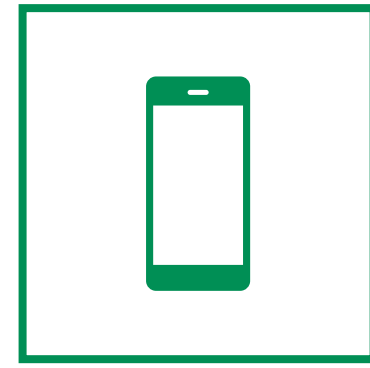


PHOTO GALLERY: ASPHALT PRODUCTION

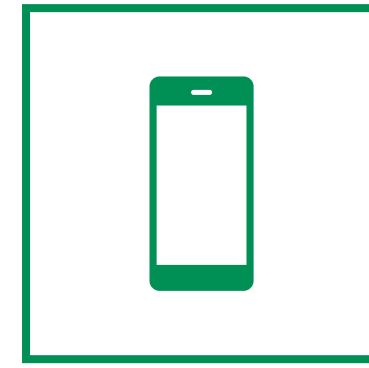








+ (965) 224 00 383



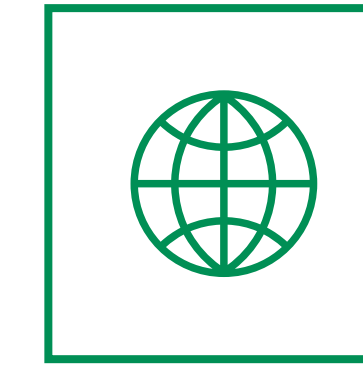
+ (965) 224 00 126



+ (965) 224 00 353



info@copri.com

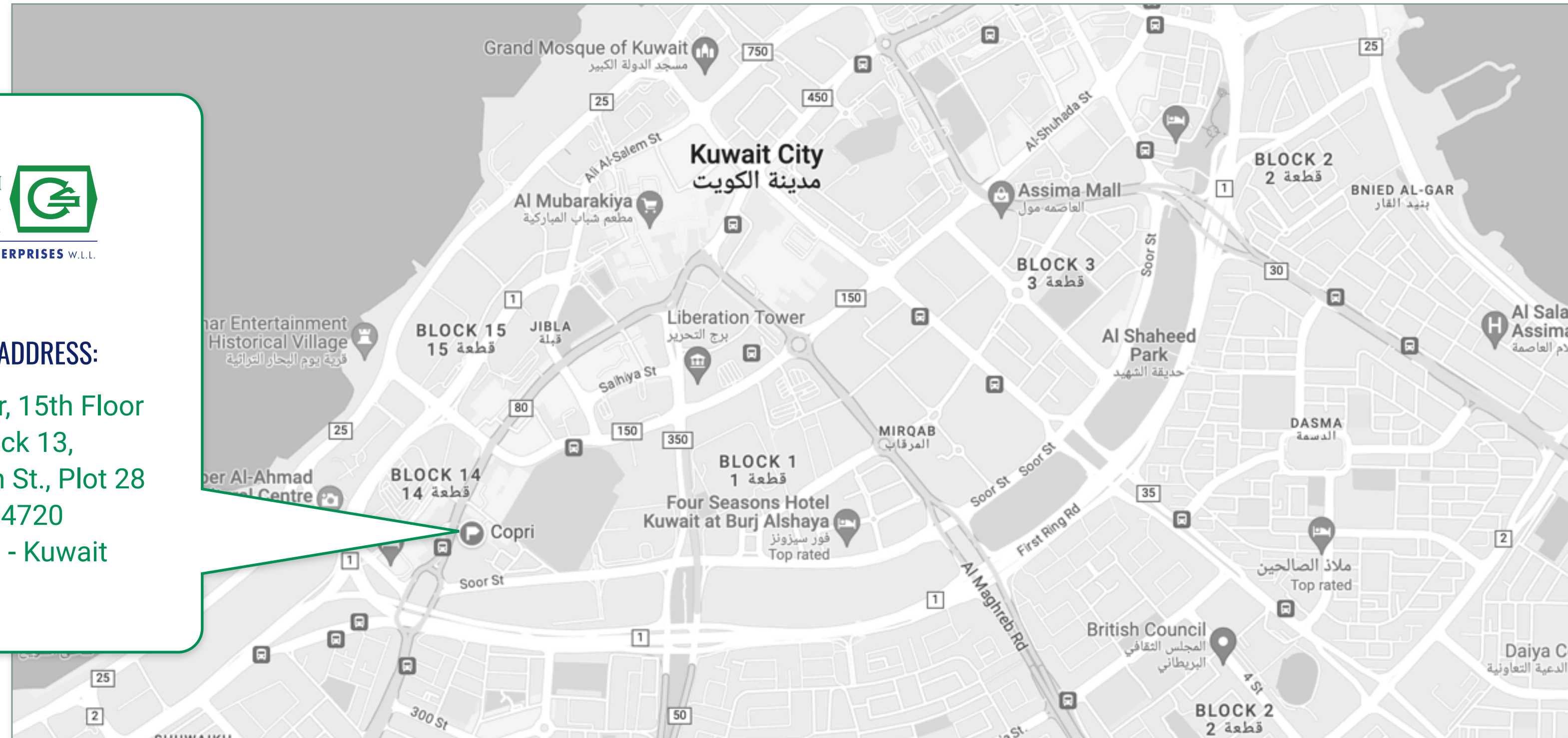


www.copri.com



## MAIN OFFICE ADDRESS:

Al Salam Tower, 15th Floor  
Qibla, Block 13,  
Fahed Al Salem St., Plot 28  
P.O. Box 4720  
Safat 13048 - Kuwait





*Create with the heart;  
Build with the mind.*

This brochure is a marketing publication intended to portray the profile of the company accurately and comprehensively. Nonetheless, this brochure is not in any form a legally binding document. The information provided on this brochure could be partially or fully updated/changed at the company's own discretion.

Concept and Design: **kaleido**